

# TPCI Community Grants Snapshots - 2011

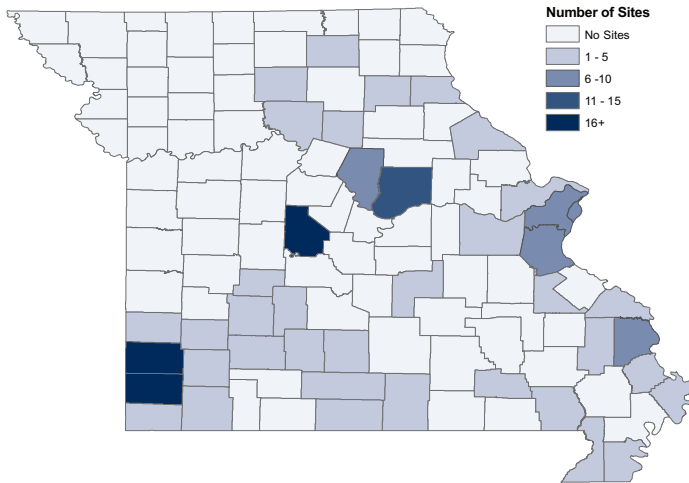
## Table of Contents

<i>Quarter 1, 2011 Snapshot.....</i>	<i>Page 2</i>
<i>Quarter 2, 2011 Snapshot.....</i>	<i>Page 4</i>
<i>Quarter 3, 2011 Snapshot.....</i>	<i>Page 6</i>
<i>Quarter 4, 2011 Snapshot.....</i>	<i>Page 8</i>

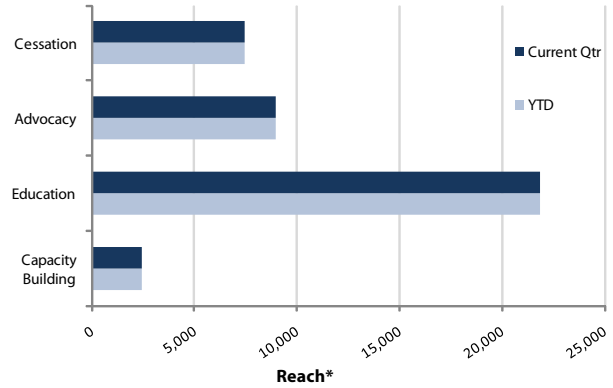
# Community Grants Snapshot: January - March 2011

## Site Data

### Active Sites by County this Quarter



### People Reached by Type of Activity



\* People reached across several activities. Categories are not mutually exclusive.

### Policy Changes Involving Youth Participation

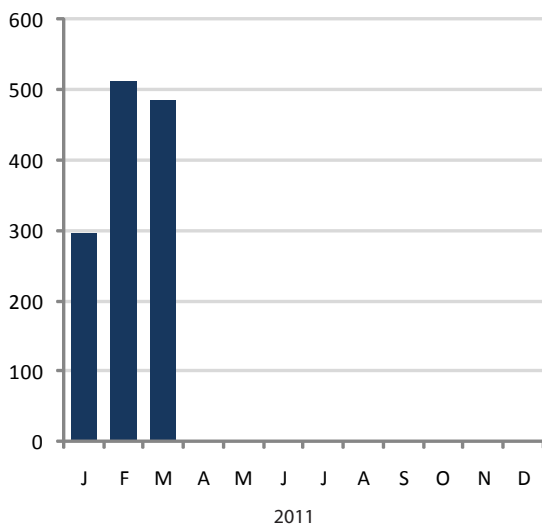
Current Qtr	YTD	Since 2007
<b>0</b>	<b>0</b>	<b>58</b>

### Number of Youth...

	Current Qtr	YTD	Since 2007
Trained	<b>262</b>	<b>262</b>	<b>7,216</b>
Involved in advocacy activities	<b>176</b>	<b>176</b>	not available
Reached by classroom presentations	<b>3,715</b>	<b>3,715</b>	<b>109,565</b>

## Cessation Services & Quit Rate Data

### People Who Attended a Cessation Class by Month



### TPCI Quit Rate

**28%**

Cumulative 7-day conservative quit rate at 6-months after treatment, with sample size of 1,716 and response rate of 54%. In comparison, quit rates among untreated smokers range from 6 -12%.

### Estimated People Who Quit

Current Qtr: **118**

YTD: **118**

Since 2007: **1,302**



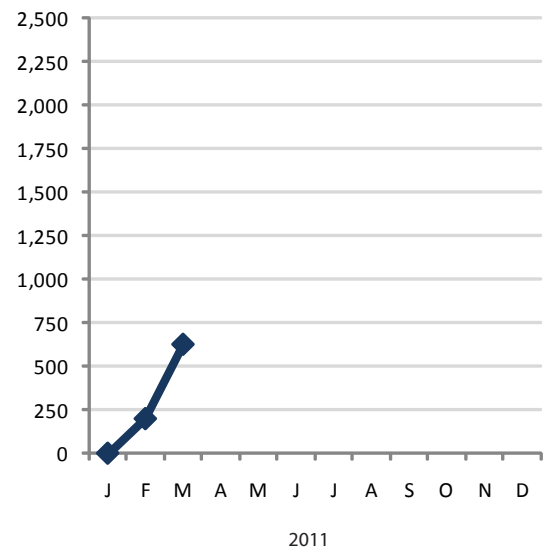
Estimates take into account a 35% relapse rate.

## Systems & Policy Changes

### Number of Systems Changes by Type

Systems Change Type	Current Qtr	YTD	Since 2011
Identify patient tobacco use through hospital/clinic-wide system	0	0	0
Build healthcare provider capacity to treat tobacco dependence through education and resources	2	2	2
Dedicate staff to provide tobacco dependence treatment	1	1	1
Provide inpatient tobacco dependence services through hospital/clinic policy	0	0	0
Other	0	0	0

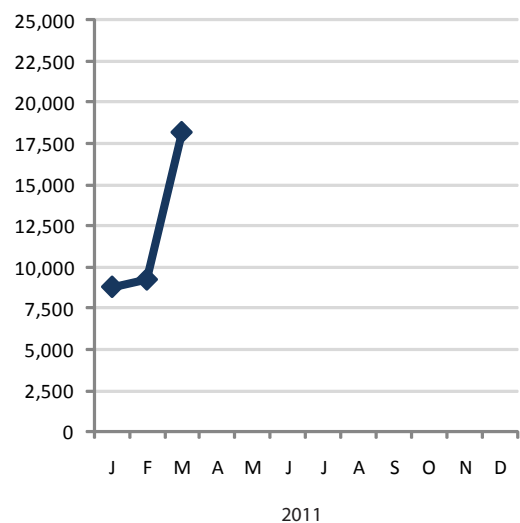
### Cumulative Number of People Covered by Systems Changes Year to Date



### Number of Policy Changes by Type

Policy Type	Current Qtr	YTD	Since 2007
<b>Community:</b> Community-wide smokefree policy changes. May or may not be comprehensive.	0	0	5
<b>School:</b> Smoke-free or tobacco-free policy changes at schools. Some policies also prohibit sponsorship from tobacco companies or identify cessation services for staff and/or students.	1	1	15
<b>Worksite:</b> Smoke-free or tobacco-free policy changes at individual worksites. Some policies also include provisions for cessation-related assistance from the employer (e.g., allowing employees time to attend cessation classes).	8	8	85

### Cumulative Number of People Covered by Policy Changes Year to Date



## Resources

### Additional Program Funding Obtained by Grantees

Current Qtr: **\$5,290**

Since 2007: **\$66,063**

### People Covered by Policy Changes since 2007

**1,504,803**



**Prepared by:**  
Center for Tobacco Policy Research  
Brown School  
Washington University in St. Louis

**Contact:**  
Sarah Shelton  
sshelton@wustl.edu  
314.935.3723

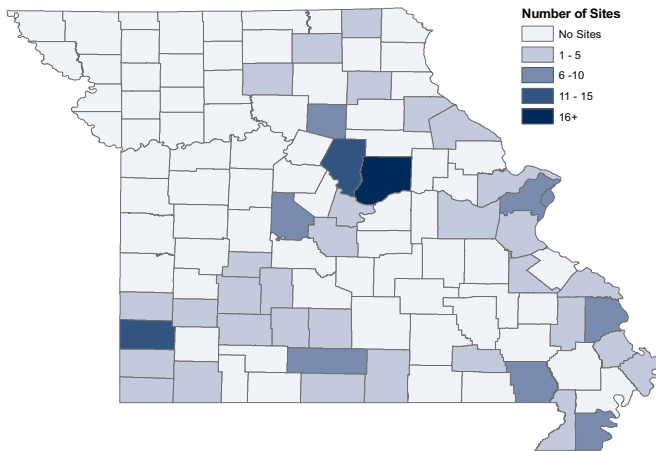


Data for this snapshot were retrieved on June 14, 2011.

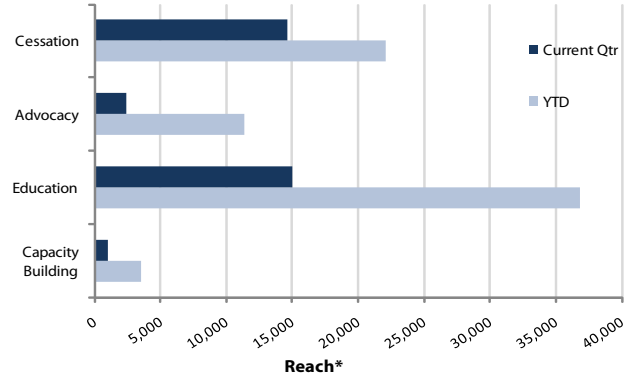
# Community Grants Snapshot: April - June 2011

## Site Data

### Active Sites by County this Quarter



### People Reached by Type of Activity



\* People reached across several activities. Categories are not mutually exclusive.

### Policy Changes Involving Youth Participation

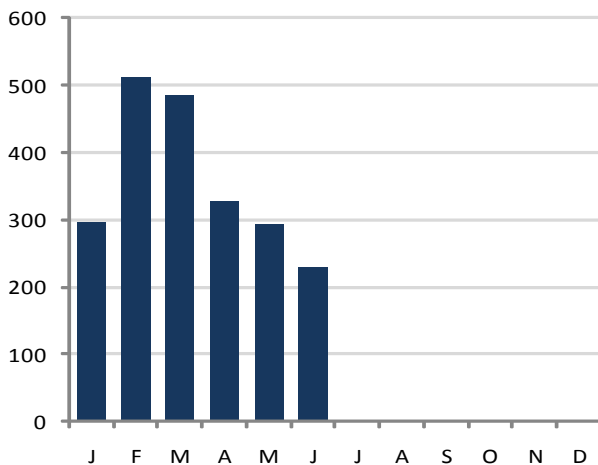
Current Qtr	YTD	Since 2007
<b>16</b>	<b>16</b>	<b>74</b>

### Number of Youth...

	Current Qtr	YTD	Since 2007
Trained	<b>71</b>	<b>333</b>	<b>7,286</b>
Involved in advocacy activities	<b>52</b>	<b>228</b>	not available
Reached by classroom presentations	<b>3416</b>	<b>7131</b>	<b>112,981</b>

## Cessation Services & Quit Rate Data

### People Who Attended a Cessation Class by Month



2011

### TPCI Quit Rate

**27%**

Cumulative 7-day conservative quit rate at 6-months after treatment, with sample size of 2,071 and response rate of 53%. In comparison, quit rates among untreated smokers range from 6 -12%.

### Estimated People Who Quit

Current Qtr: **74**

YTD: **192**

Since 2007: **1,376**



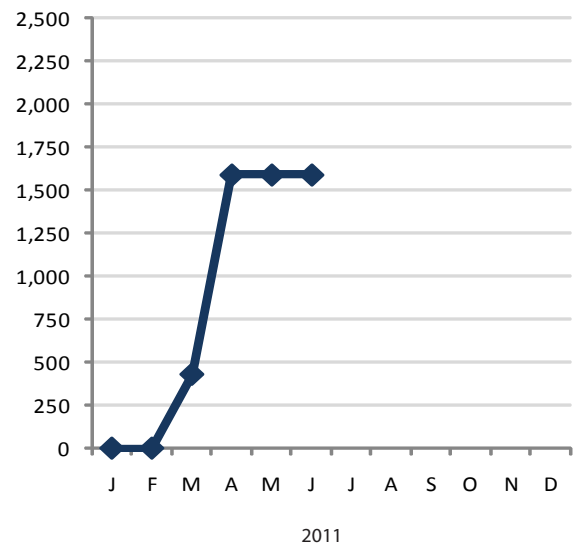
Estimates take into account a 35% relapse rate.

## Systems & Policy Changes

### Number of Systems Changes by Type

Systems Change Type	Current Qtr	YTD	Since 2011
Identify patient tobacco use through hospital/clinic-wide system	0	0	0
Build healthcare provider capacity to treat tobacco dependence through education and resources	1	2	2
Dedicate staff to provide tobacco dependence treatment	0	1	1
Provide inpatient tobacco dependence services through hospital/clinic policy	0	0	0
Other	0	0	0

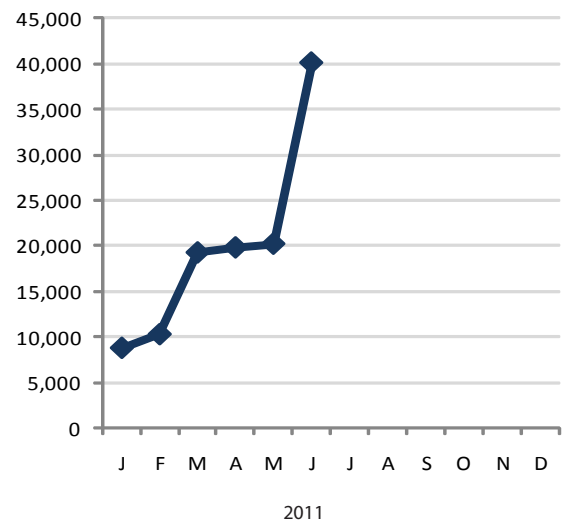
### Cumulative Number of People Covered by Systems Changes Year to Date



### Number of Policy Changes by Type

Policy Type	Current Qtr	YTD	Since 2007
<b>Community:</b> Community-wide smokefree policy changes. May or may not be comprehensive.	1	2	7
<b>School:</b> Smoke-free or tobacco-free policy changes at schools. Some policies also prohibit sponsorship from tobacco companies or identify cessation services for staff and/or students.	1	2	16
<b>Worksite:</b> Smoke-free or tobacco-free policy changes at individual worksites. Some policies also include provisions for cessation-related assistance from the employer (e.g., allowing employees time to attend cessation classes).	16	24	101

### Cumulative Number of People Covered by Policy Changes Year to Date



## Resources

### Additional Program Funding Obtained by Grantees

Current Qtr: **\$8,436**

Since 2007: **\$74,499**

### People Covered by Policy Changes since 2007

**1,526,678**



**Prepared by:**  
Center for Tobacco Policy Research  
Brown School  
Washington University in St. Louis

**Contact:**  
Sarah Shelton  
sshelton@wustl.edu  
314.935.3723

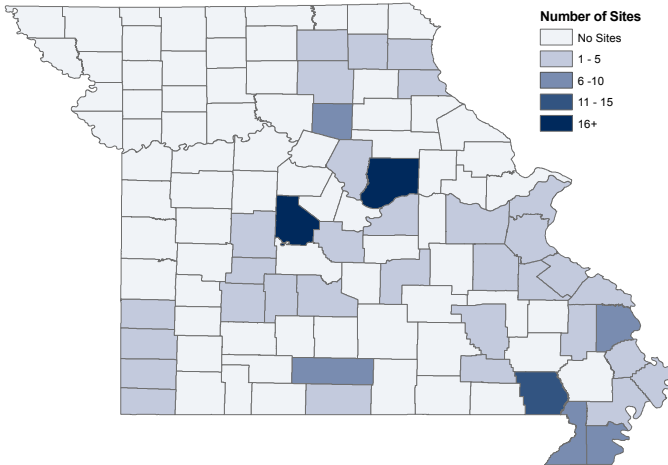


Data for this snapshot were retrieved on August 26, 2011.

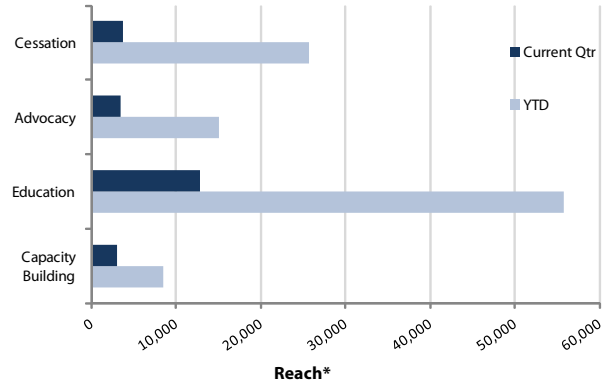
# Community Grants Snapshot: July - September 2011

## Site Data

### Active Sites by County this Quarter



### People Reached by Type of Activity



\* People reached across several activities. Categories are not mutually exclusive.

### Policy Changes Involving Youth Participation

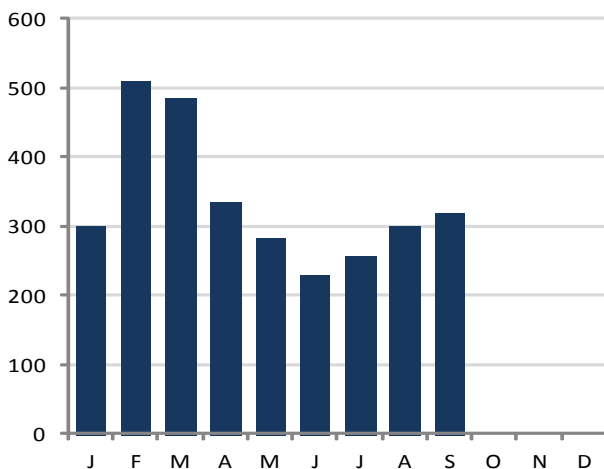
Current Qtr	YTD	Since 2007
<b>4</b>	<b>20</b>	<b>78</b>

### Number of Youth...

	Current Qtr	YTD	Since 2007
Trained	<b>161</b>	<b>506</b>	<b>7,460</b>
Involved in advocacy activities	<b>78</b>	<b>316</b>	not available
Reached by classroom presentations	<b>2,299</b>	<b>9,900</b>	<b>115,750</b>

## Cessation Services & Quit Rate Data

### People Who Attended a Cessation Class by Month



2011

### TPCI Quit Rate

**27%**

Cumulative 7-day conservative quit rate at 6-months after treatment, with sample size of 2,555 and response rate of 54%. In comparison, quit rates among untreated smokers range from 6 -12%.

### Estimated People Who Quit

Current Qtr: **75**  
YTD: **267**  
Since 2007: **1,439**



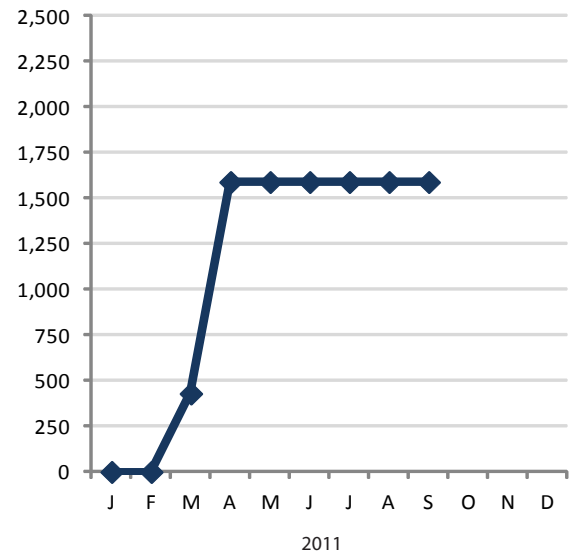
Estimates take into account a 35% relapse rate.

## Systems & Policy Changes

### Number of Systems Changes by Type

Systems Change Type	Current Qtr	YTD	Since 2011
Identify patient tobacco use through hospital/clinic-wide system	0	0	0
Build healthcare provider capacity to treat tobacco dependence through education and resources	0	1	1
Dedicate staff to provide tobacco dependence treatment	0	1	1
Provide inpatient tobacco dependence services through hospital/clinic policy	0	0	0
Other	0	0	0

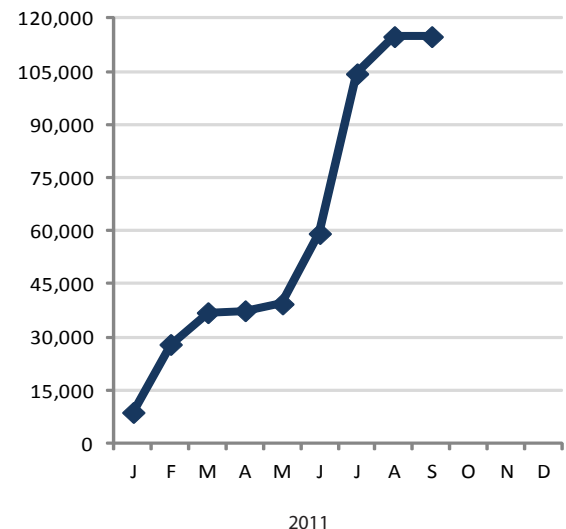
### Cumulative Number of People Covered by Systems Changes Year to Date



### Number of Policy Changes by Type

Policy Type	Current Qtr	YTD	Since 2007
<b>Community:</b> Community-wide smokefree policy changes. May or may not be comprehensive.	0	2	7
<b>School:</b> Smoke-free or tobacco-free policy changes at schools. Some policies also prohibit sponsorship from tobacco companies or identify cessation services for staff and/or students.	6	8	22
<b>Worksite:</b> Smoke-free or tobacco-free policy changes at individual worksites. Some policies also include provisions for cessation-related assistance from the employer (e.g., allowing employees time to attend cessation classes).	4	28	105

### Cumulative Number of People Covered by Policy Changes Year to Date



## Resources

### Additional Program Funding Obtained by Grantees

Current Qtr: **\$600**

Since 2007: **\$75,099**

### People Covered by Policy Changes since 2007

**1,601,433**



**Prepared by:**  
Center for Tobacco Policy Research  
Brown School  
Washington University in St. Louis

**Contact:**  
Sarah Shelton  
sshelton@wustl.edu  
314.935.3723

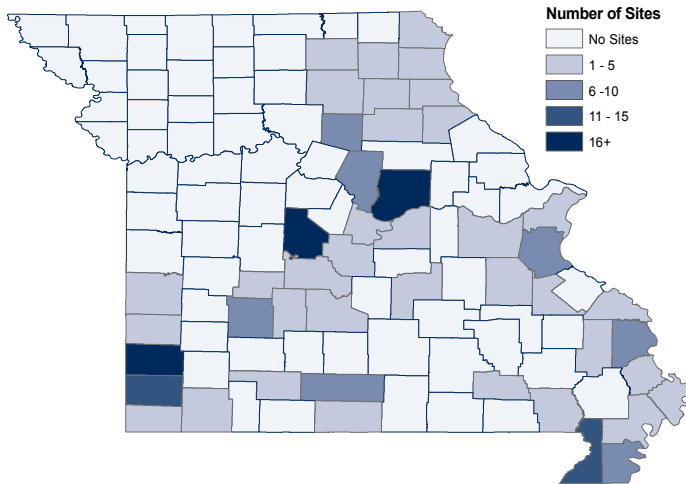


Data for this snapshot were retrieved on Nov. 18, 2011.

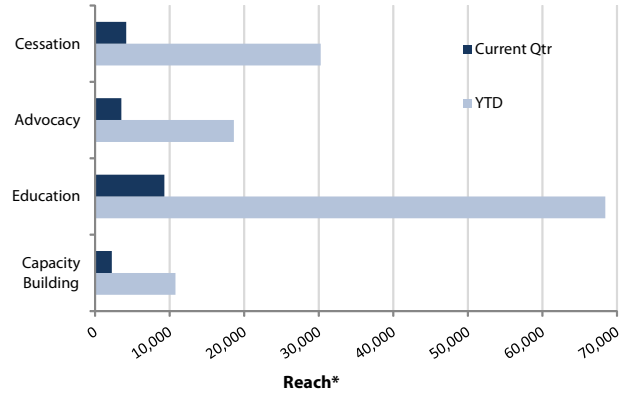
# Community Grants Snapshot: October - December 2011

## Site Data

### Active Sites by County this Quarter



### People Reached by Type of Activity



\* People reached across several activities. Categories are not mutually exclusive.

### Policy Changes Involving Youth Participation

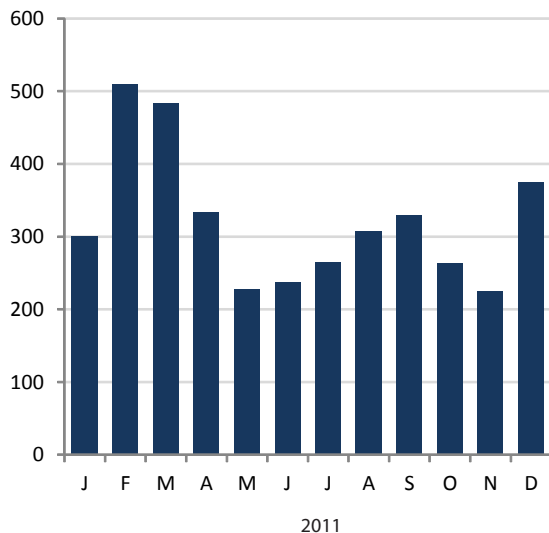
Current Qtr	YTD	Since 2007
<b>3</b>	<b>23</b>	<b>81</b>

### Number of Youth...

	Current Qtr	YTD	Since 2007
Trained	<b>1,000</b>	<b>1,546</b>	<b>8,500</b>
Involved in advocacy activities	<b>218</b>	<b>534</b>	not available
Reached by classroom presentations	<b>2,611</b>	<b>12,742</b>	<b>118,592</b>

## Cessation Services & Quit Rate Data

### People Who Attended a Cessation Class by Month



### TPCI Quit Rate

**28%**

Cumulative 7-day conservative quit rate at 6-months after treatment, with sample size of 2,904 and response rate of 53%. In comparison, quit rates among untreated smokers range from 6 - 12%.

### Estimated People Who Quit

Current Qtr: **77**

YTD: **350**

Since 2007: **1,522**



Estimates take into account a 35% relapse rate.

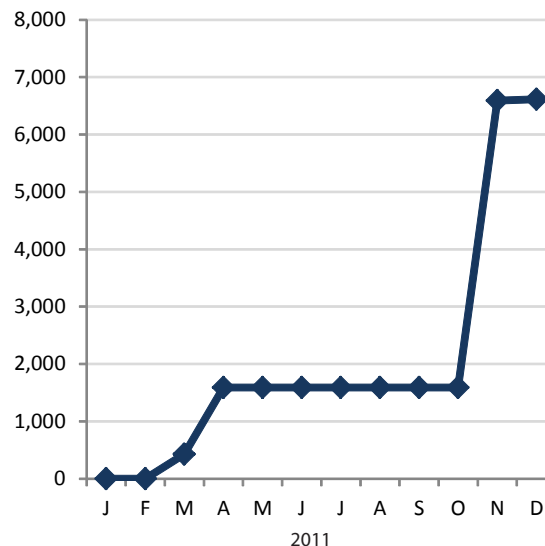


## Systems & Policy Changes

### Number of Systems Changes by Type

Systems Change Type	Current Qtr	YTD	Since 2011
Identify patient tobacco use through hospital/clinic-wide system	0	0	0
Build healthcare provider capacity to treat tobacco dependence through education and resources	1	2	2
Dedicate staff to provide tobacco dependence treatment	0	1	1
Provide inpatient tobacco dependence services through hospital/clinic policy	1	1	1
Other	0	0	0

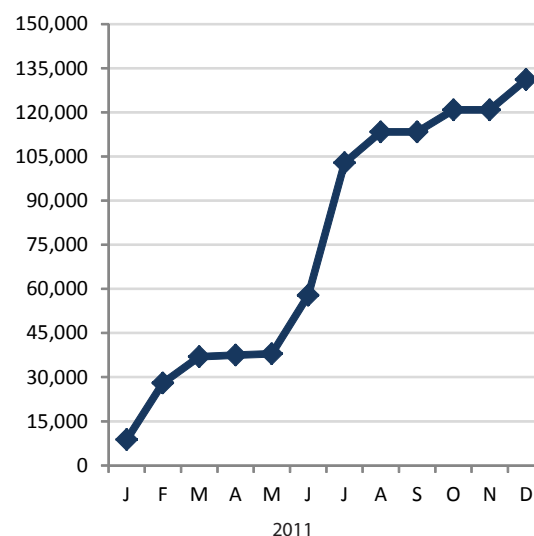
### Cumulative Number of People Covered by Systems Changes Year to Date



### Number of Policy Changes by Type

Policy Type	Current Qtr	YTD	Since 2007
<b>Community:</b> Community-wide smokefree policy changes. May or may not be comprehensive.	1	3	8
<b>School:</b> Smoke-free or tobacco-free policy changes at schools. Some policies also prohibit sponsorship from tobacco companies or identify cessation services for staff and/or students.	0	8	22
<b>Worksite:</b> Smoke-free or tobacco-free policy changes at individual worksites. Some policies also include provisions for cessation-related assistance from the employer (e.g., allowing employees time to attend cessation classes).	4	32	109

### Cumulative Number of People Covered by Policy Changes Year to Date



## Resources

### Additional Program Funding Obtained by Grantees

Current Qtr: **\$4,365**

Since 2007: **\$79,464**

### People Covered by Policy Changes since 2007

**1,617,778**



**Prepared by:**  
Center for Tobacco Policy Research  
Brown School  
Washington University in St. Louis

**Contact:**  
Sarah Shelton  
sshelton@wustl.edu  
314.935.3723



Data for this snapshot were retrieved on Feb. 22, 2012.