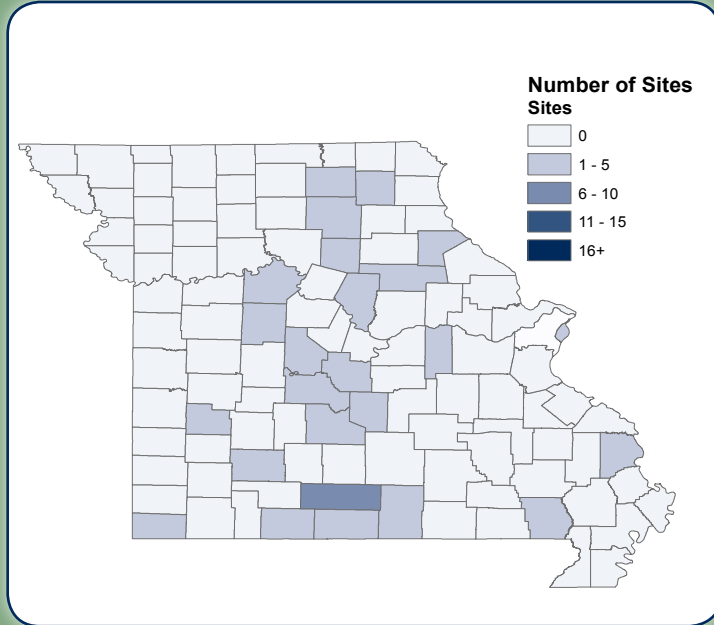
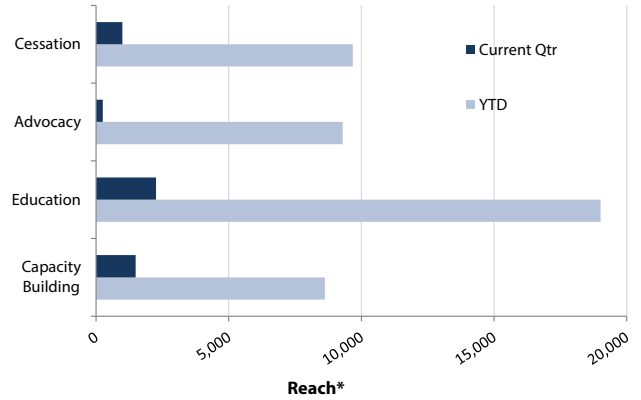


# TPCI Grants Snapshot: October - December 2013

## Site Data



## People Reached by Type of Activity



\* People reached across several activities. Categories are not mutually exclusive.

## Policy Changes Involving Youth Participation

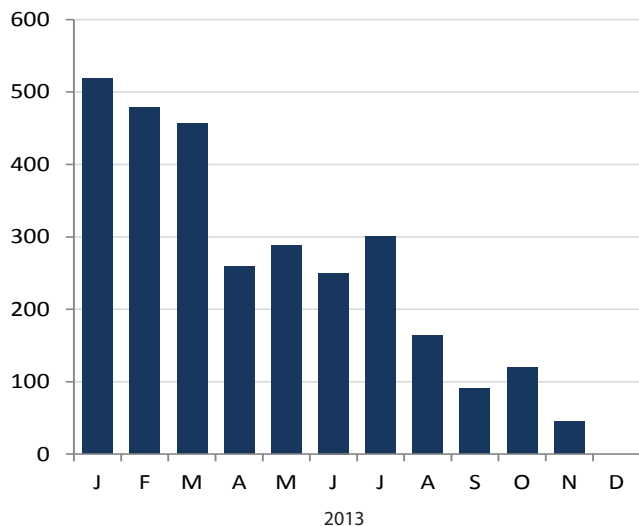
Current Qtr	YTD	Since 2007
<b>0</b>	<b>0</b>	<b>87</b>

## Number of Youth...

	Current Qtr	YTD	Since 2007
Trained	<b>20</b>	<b>113</b>	<b>9,797</b>
Involved in advocacy activities	<b>2</b>	<b>56</b>	not available
Reached by classroom presentations	<b>935</b>	<b>4,831</b>	<b>131,962</b>

## Cessation Services & Quit Rate Data

### People Who Attended a Cessation Class by Month



### TPCI Quit Rate

**28%**

Cumulative 7-day conservative quit rate at 6-months after treatment, with sample size of 4,324 and response rate of 54%. In comparison, quit rates among untreated smokers range from 6 - 12%.

### Estimated People Who Quit

Current Qtr: **7**

YTD: **156**

Since 2007: **1,934**



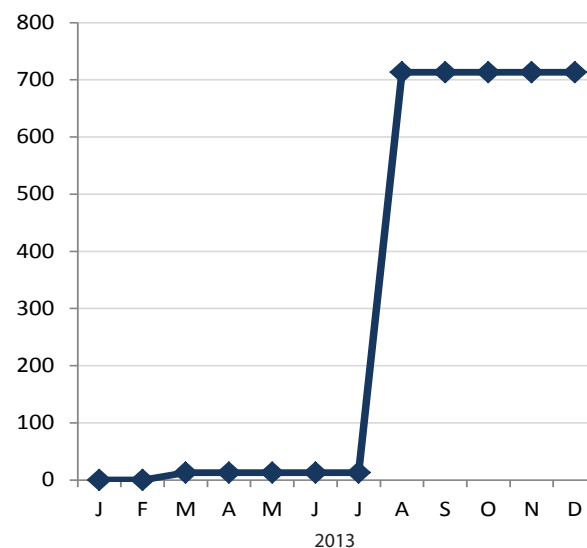
Estimates take into account a 35% relapse rate.

## Systems & Policy Changes

### Number of Systems Changes by Type

Systems Change Type	Current Qtr	YTD	Since 2011
Identify patient tobacco use through hospital/clinic-wide system	0	0	1
Build healthcare provider capacity to treat tobacco dependence through education and resources	0	1	4
Dedicate staff to provide tobacco dependence treatment	0	1	2
Provide inpatient tobacco dependence services through hospital/clinic policy	0	0	1
Other	0	0	0

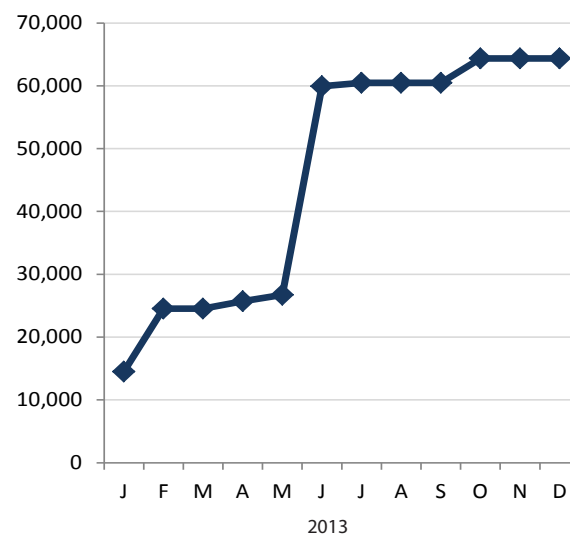
### Cumulative Number of People Covered by Systems Changes Year to Date



### Number of Policy Changes by Type

Policy Type	Current Qtr	YTD	Since 2007
<b>Community:</b> Community-wide smokefree policy changes. May or may not be comprehensive.	0	6	18
<b>School:</b> Smoke-free or tobacco-free policy changes at schools. Some policies also prohibit sponsorship from tobacco companies or identify cessation services for staff and/or students.	0	1	29
<b>Worksite:</b> Smoke-free or tobacco-free policy changes at individual worksites. Some policies also include provisions for cessation-related assistance from the employer (e.g., allowing employees time to attend cessation classes).	13	24	149

### Cumulative Number of People Covered by Policy Changes Year to Date



## Resources

### Additional Program Funding Obtained by Grantees

Current Qtr: **\$0**

Since 2007: **\$106,702**

### People Covered by Policy Changes since 2007

**1,993,753**



**Prepared by:**  
Center for Public Health Systems Science  
Washington University in St. Louis

**Contact:**  
Christopher Robichaux  
crobichau@wustl.edu  
314.935.3648



**GEORGE WARREN BROWN  
SCHOOL OF SOCIAL WORK**